



Acute liver failure:

Experience on the Center for Medical and Surgical Research of Cuba



Authors: Abdo A, Castellanos R, Suarez J,
López O, Hernández E, Rocha M.

aaabdo@infomed.sld.cu

<http://www.sld.cu/sitios/trasplante>



Acute liver failure

Acute liver failure (ALF) is characterized by an impairment of the liver function. The clinical marker is the coagulopathy and encephalopathy. On theory is a reversible situation but on the practice evolves to multiorgan dysfunction, that on 80% of the patients it has as the only solution a liver transplant.

Acute liver failure

Objetives: **1.** To characterize the patients with the ALF diagnosis. **2.** To determine the cerebral hemodynamic pattern by transcranial doppler. **3.** To evaluate the use of the continuous veno venous hemodiafiltration (CVVH) on the first 12 hours of treatment. **4.** To characterize the final evolvement regarding therapeutical behaviors .

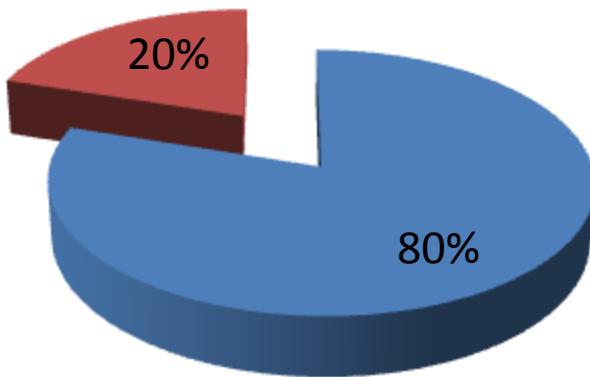
Method: Review the clinical files of the patients with ALF diagnosis in the Critical Care Unit of the CIMEQ, between the years 1999 and 2009.

Acute liver failure

Center for Medical and Surgical Research of Cuba. 1999 - 2009

Gender

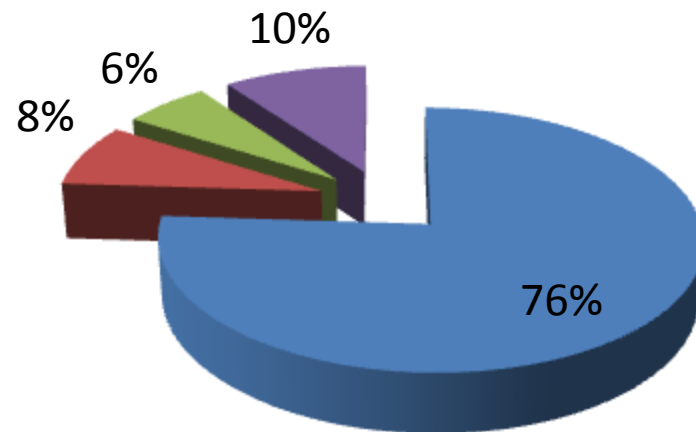
■ Female ■ Male



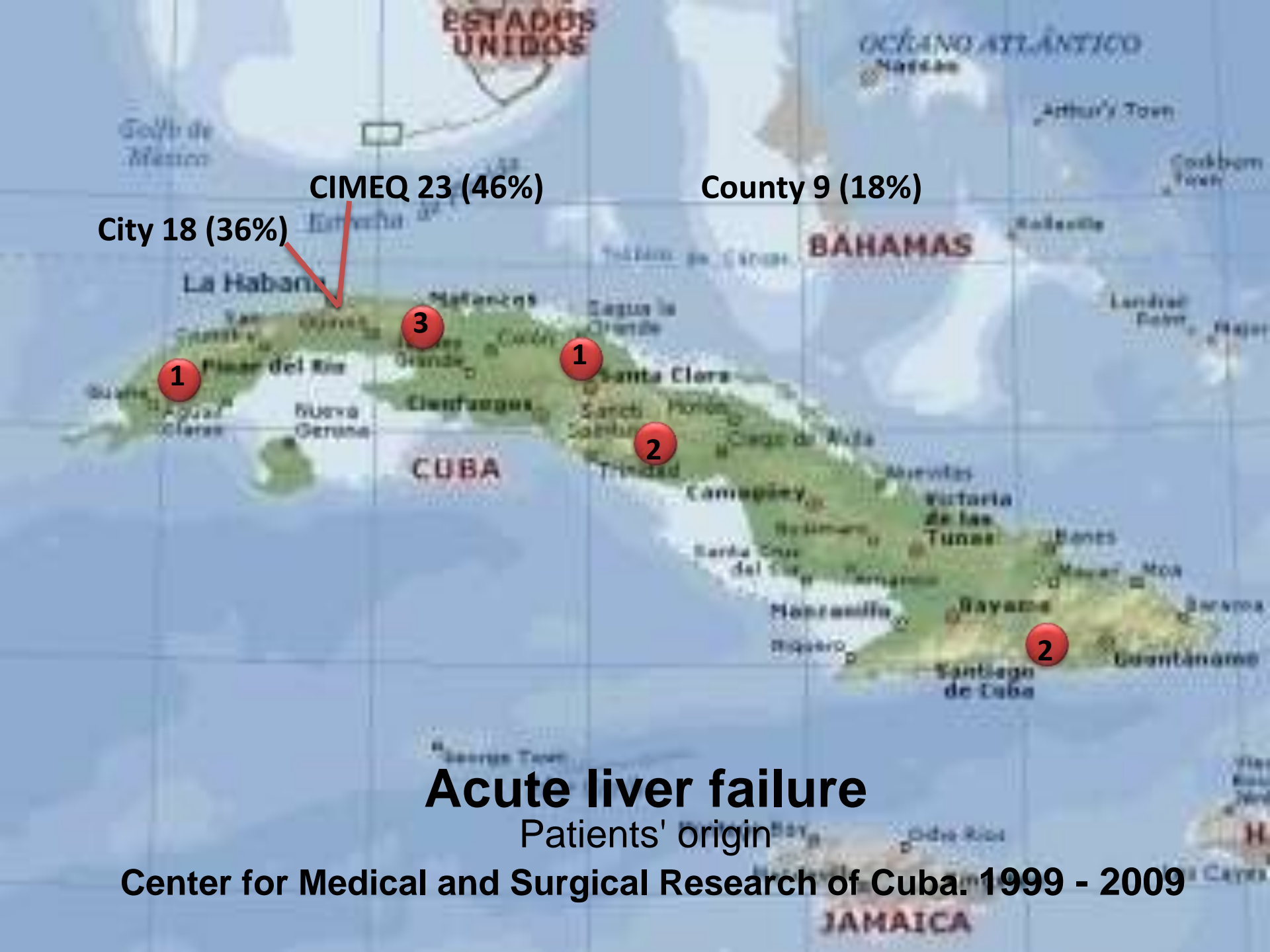
Half age: 38 years old

Etiology

■ Unknown ■ HVA ■ Toxic ■ Others



Others: Liver fatty pregnancy, Wilson, HVB, Budd Chiari



City 18 (36%)

CIMEQ 23 (46%)

County 9 (18%)

Acute liver failure

Patients' origin

Center for Medical and Surgical Research of Cuba. 1999 - 2009

Evaluation of hemodynamic, oxygenation and metabolic variables, with the use of continuous veno venous hemodiafiltration (CVVH) in the first 12 hours of treatment



Variable	Beginning	12 hours	p
Heart frequency	112	88	0.238
Medial arterial pressure	77	77	0.626
Norepinefrine dose	0.2	0.4	0.667
FiO ₂	48	43	0.154
SO ₂	96	99	0.512
Creatinine	1.5	1.4	0.587
Bun	0.3	0.2	0.123
Bases excess	-7.4	-9,1	0.825
Temperature	35.6	35.1	0.667

Value means of variables obtained through the Transcranial Doppler

	ALF
Sistolic Velocity cm/seg	117
Diastolyc Velocity cm/seg	35
Medium Velocity cm/seg	56
Pulsatibility Index	1.6

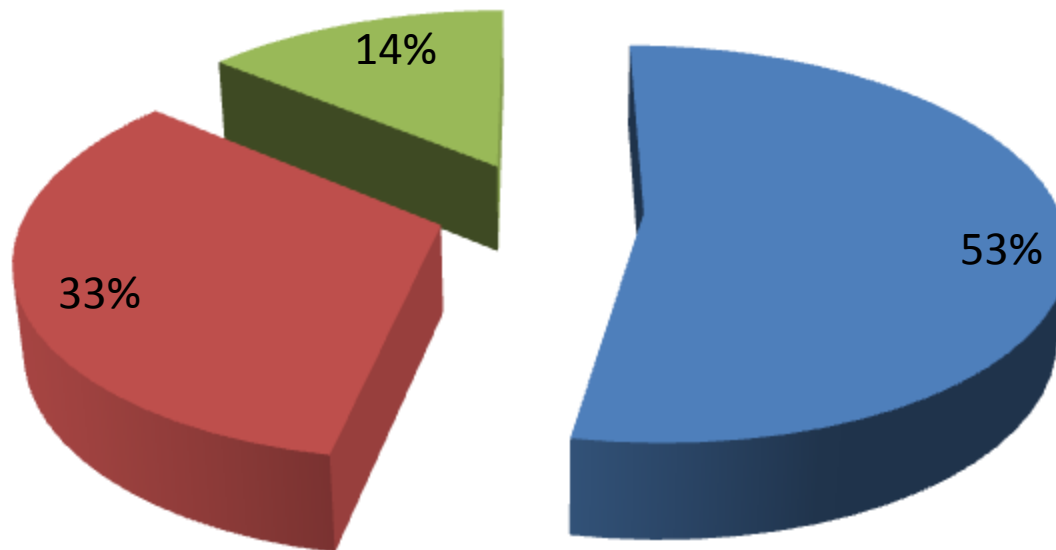


Acute liver failure

Center for Medical and Surgical Research of Cuba. 1999 - 2009

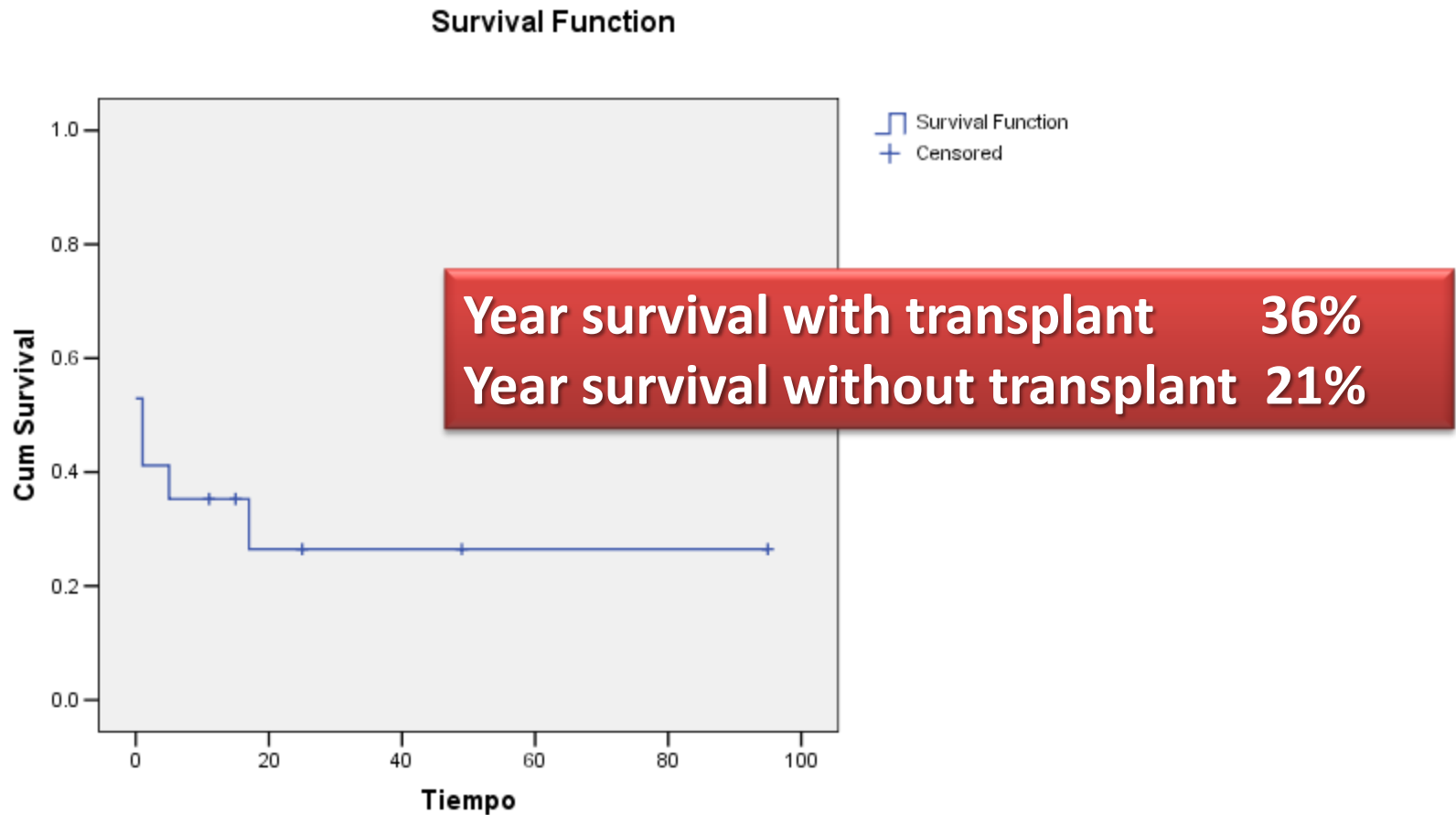
Results

■ Deceaseds ■ Transplant ■ Recovered



Acute liver failure

Center for Medical and Surgical Research of Cuba. 1999 - 2009



Conclusions

- ❑ The average patient was female, with 38 years old and unknown etiology.
- ❑ The cerebral hemodynamic pattern more frequent was high resistance.
- ❑ The CVVH was useful to improve the oxygenation variables on patients with ALF and MOD.
- ❑ The liver transplant is the best therapeutic option.